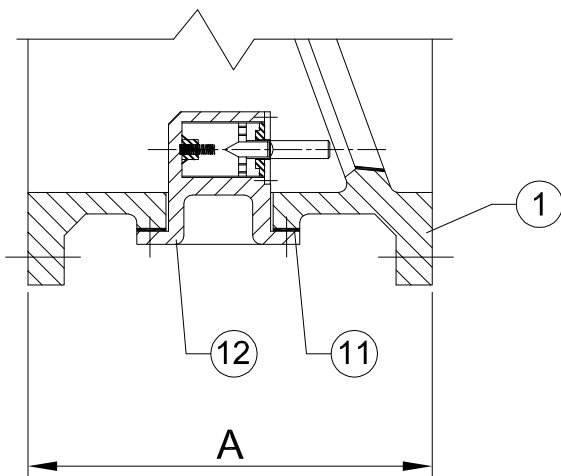
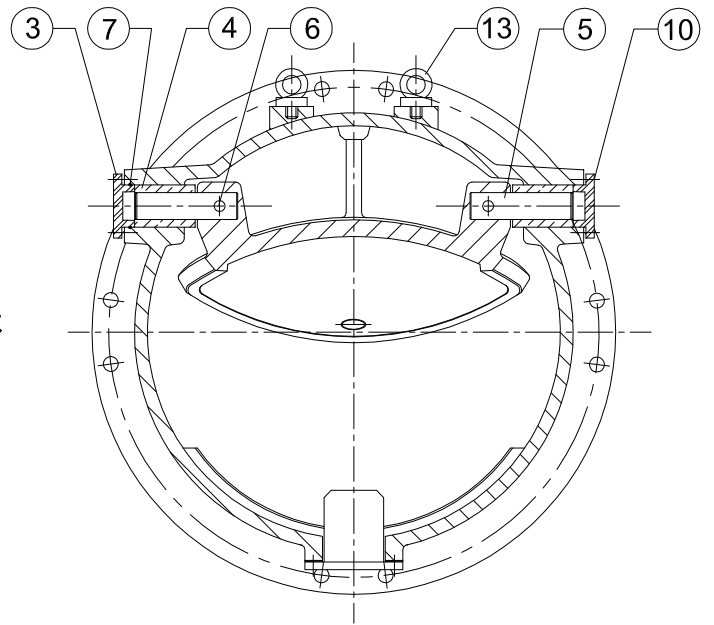
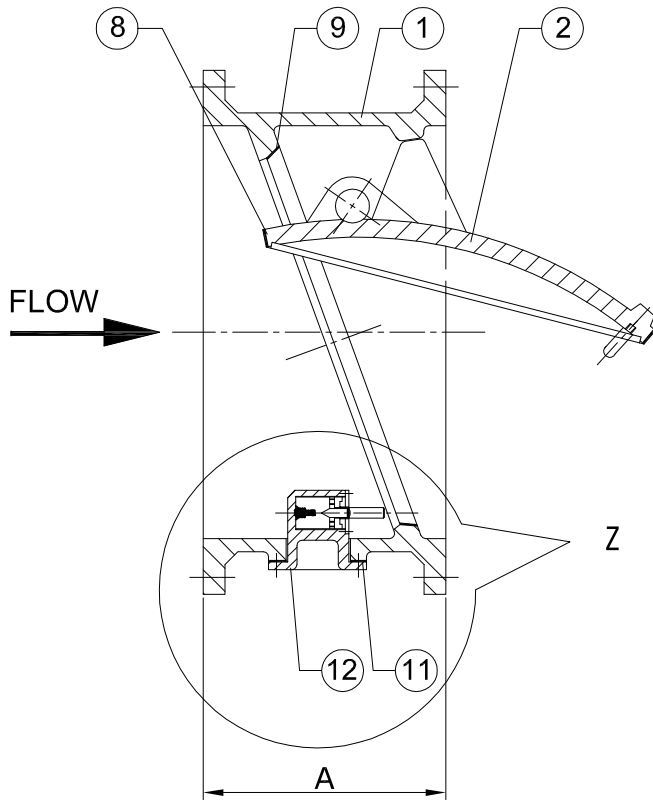


FLANGE END TILTING DISC CHECK VALVE



ENLARGED VIEW OF 'Z'

STANDARD SPECIFICATION

SIZE	200 mm TO 1000 mm
MFG. / DESIGN STD.	AS PER DVPL DESIGN
PRESSURE RATING	PN 1.0, PN 1.6, PN 2.5
FLANGE ENDS	IS / BS / ANSI / DIN

MATERIALS OF CONSTRUCTION

SL. No.	DESCRIPTION	MATERIAL	SPECIFICATION
1.	BODY	D.I./S.G. IRON	DIN 1693 Gr. GGG-50 / IS:1865 Gr. 400/12
2.	DISC		
3.	RETAINER		
4.	BEARING BUSHES	L.T. BRONZE	IS:318 Gr. LTB 2
5.	SHAFT	STAINLESS STEEL	AISI-410
6.	DOWEL PIN	STAINLESS STEEL	AISI-304
7.	RUBBER 'O' RING	EPDM RUBBER (Shore Hardness 65±3)	
8.	BODY SEAT RING	STAINLESS STEEL	NICKEL WELD OVERLAY
9.	DISC FACE SEAT		
10.	EXTERNAL FASTENERS	CARBON STEEL	IS:1367 CL-4.6 & 4
11.	RUBBER GASKET	NITRILE / NATURAL	-
12.	DAMPER UNIT	MFR'S STD.	
13.	LIFTING LUG	CARBON STEEL	FORGED QUALITY

FACE TO FACE (A)	230	250	270	290	310	330	350	390	430	450	470	510	550
VALVE SIZE (mm)	200	250	300	350	400	450	500	600	700	750	800	900	1000