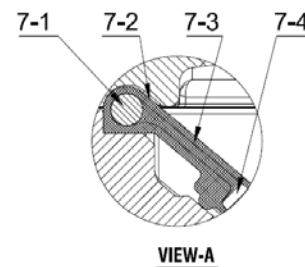
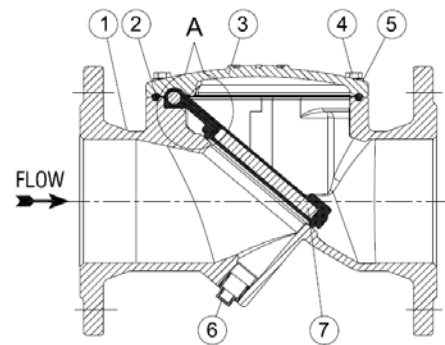


RESILIENT SEATED CHECK VALVE



MATERIALS OF CONSTRUCTIONS

SL. No.	DESCRIPTION	MATERIAL
1	BODY	DUCTILE IRON
2	O-RING	RUBBER
3	COVER	DUCTILE IRON
4	BOLT	CARBON STEEL (GALVANIZED)
5	WASHER	CARBON STEEL (GALVANIZED)
6	PLUG (OPTION)	CARBON STEEL (GALVANIZED)
7	DISC	DUCTILE IRON + RUBBER
7-1	BAR	STEEL
7-2	LINING	RUBBER
7-3	REINFORCEMENT FABRIC	NYLON
7-4	DISC PLATE	DUCTILE IRON

DESIGN FEATURES	
SIZE RANGE	50 MM TO 600 MM
PRESSURE RATING	PN 1.0, PN 1.6, PN 2.0, PN 2.5
DESIGN STANDARD	MANUFACTURER'S STD.
TESTING STANDARD	IS: 5312, API 598
FLANGE STANDARD	BS / IS / ANSI / DIN
MATERIAL	DUCTILE IRON

HYDROSTATIC TEST PRESSURE (Kg/Cm ²)		
RATING	BODY	SEAT
PN 1.0	15	10
PN 1.6	24	16
PN 2.0	30	20
PN 2.5	38	25

DIMENSION TABLE

SL. No.	SIZE	FACE TO FACE	FLANGE DIA	FLANGE THICKNESS	PCD	NO. OF HOLE	HOLE DIA
1	50 MM	203	165	19	125	4	19
2	65 MM	216	185	19	145	4	19
3	80 MM	241	200	19	160	4	19
4	100 MM	292	220	19	180	8	19
5	125 MM	330	250	19	210	8	19
6	150 MM	356	285	19	240	8	23
7	200 MM	495	340	20	295	8	23
8	250 MM	622	405	22	350	12	23
9	300 MM	698	460	24.5	400	12	23
10	350 MM	787	520	26.5	460	16	23
11	400 MM	914	580	28	515	16	28
12	450 MM	914	640	30	565	20	28
13	500 MM	978	715	31.5	620	20	28
14	600 MM	1100	840	36	725	20	31

ALL DIMENSIONS ARE IN MM.