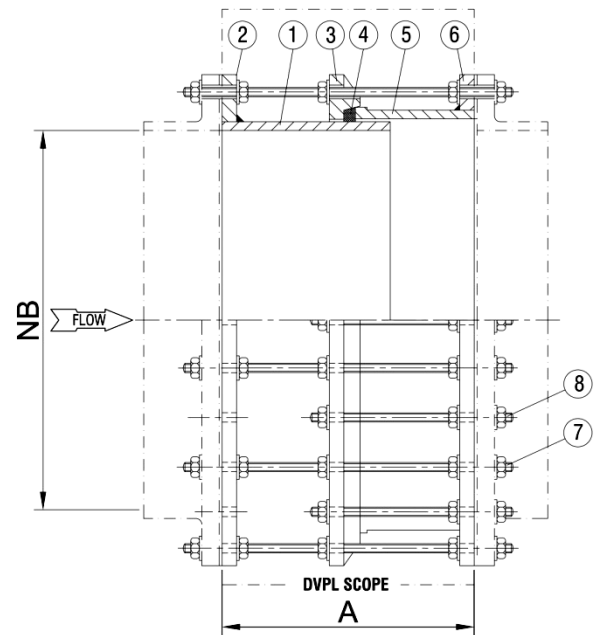
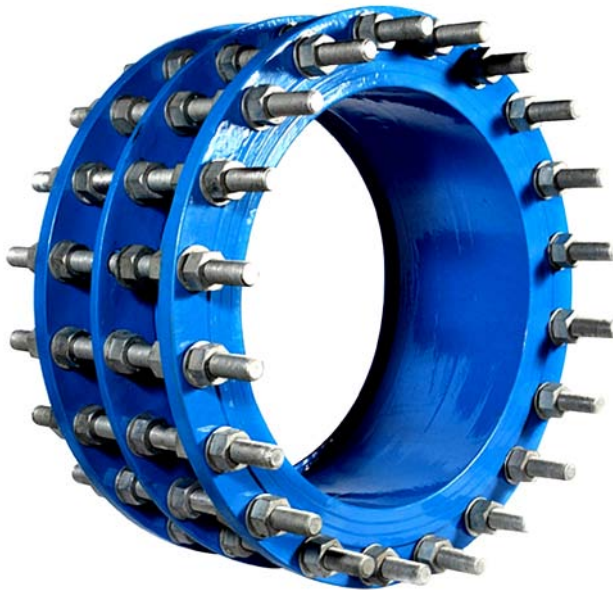


# DISMANTLING JOINT



## MATERIALS OF CONSTRUCTIONS

SL. No.	DESCRIPTION	MATERIAL
1	EXPANSION PIPE	M.S. / C.I. / D.I.
2	EXPANSION PIPE FLANGE	M.S. / C.I. / D.I.
3	FLANGE RING	M.S. / C.I. / D.I.
4	RUBBER RING	NITRILE RUBBER
5	STOPPER PIPE	M.S. / C.I. / D.I.
6	STOPPER PIPE FLANGE	M.S. / C.I. / D.I.
7	TIE ROD & NUT (LONG)	CARBON STEEL (ELEC. PLATED)/SS 304/316
8	STUDS & NUTS (SHORT)	CARBON STEEL (ELEC. PLATED)/SS 304/316

DESIGN FEATURES	
SIZE RANGE	100 MM TO 1500 MM
PRESSURE RATING	PN 0.4, PN 0.6, PN 1.0, PN 1.6 & PN 2.0
DESIGN STANDARD	DVPL
FLANGE ENDS	IS / BS / ANSI / DIN
MATERIAL	M.S. / C.I. / D.I.

HYDROSTATIC TEST PRESSURE (Kg/Cm <sup>2</sup> )		
RATING	BODY	SEAT
PN 1.0	15	10

## DIMENSION TABLE

SL. No.	SIZE	FACE TO FACE (MIN)	FACE TO FACE (MAX)	FLANGE DIA	FLANGE THIK.	PCD	NO. OF HOLE	HOLE DIA
1	100 MM	300	350	220	22	180	8	19
2	125 MM	300	350	250	22.5	210	8	19
3	150 MM	300	350	285	23	240	8	23
4	200 MM	300	350	340	24.5	295	8	23
5	250 MM	300	350	395	26	350	12	23
6	300 MM	300	350	445	27.5	400	12	23
7	350 MM	300	350	505	29	460	16	23
8	400 MM	300	350	565	30	515	16	28
9	450 MM	300	350	615	31.5	565	20	28
10	500 MM	300	350	670	33	620	20	28
11	600 MM	300	350	780	36	725	20	31
12	700 MM	300	350	895	38.5	840	24	31
13	750 MM	325	375	960	40	900	24	31
14	800 MM	325	375	1015	41.5	950	24	34
15	900 MM	325	375	1115	44	1050	28	34
16	1000 MM	360	420	1230	47	1160	28	37
17	1100 MM	360	420	1340	50	1270	32	37
18	1200 MM	375	425	1455	53	1380	32	40
19	1500 MM	400	450	1800	61	1710	40	43

ALL DIMENSIONS ARE IN MM.